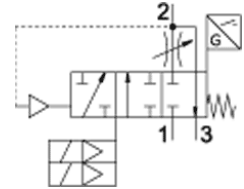
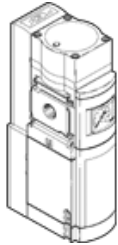


# soft-start/quick exhaust valve MS6-SV-1/2-E-10V24-AG

Número de artículo: 548715

FESTO



[PDF Condiciones de servicio generales](#)

[→ Portal de Soporte técnico](#)

## Hoja de datos, fiabilidad del producto

La información de esta "Hoja de datos de fiabilidad del producto" se fundamenta en el uso previsto del producto. Incluye el cumplimiento de todas las especificaciones, p. ej., de la hoja de datos, el catálogo, la documentación de usuario y las condiciones generales de funcionamiento. Es exclusivamente el usuario quien se responsabiliza de determinar si un producto se adecúa a una determinada aplicación.

Característica	Valor
CE mark (see declaration of conformity)	To EU EMC Directive To EU Machinery Directive
Safety function <sup>1)</sup>	Exhausting Prevention of unexpected start-up (pressurisation)
Performance Level (PL) <sup>2)</sup>	Exhausting/up to Category 4, Performance Level e Prevention of unexpected start-up (pressurisation) / up to category 4, Performance Level e
Safety Integrity Level (SIL) <sup>3)</sup>	Exhausting / Safety Integrity Level 3 Prevention of unexpected start-up (pressurisation) / Safety Integrity Level 3
Certificate issuing authority	IFA 1001180
Mean number of annual operations n <sub>op</sub> (assumed) <sup>4)</sup>	8.760
Probability of Dangerous Failure per Hour (PFHd) <sup>5)</sup>	5,19*10 <sup>-9</sup>
Common Cause Failure (CCF) measures <sup>6)</sup>	Safely keep operating pressure within the limits of the technical specifications Observe compressed air quality Comply with maximum vibration and shock loads Comply with ambient temperature and temperature of medium
Service-life value B <sub>10</sub> <sup>7)</sup>	0,9 Mio SP
Service-life value at the maximum permissible operating pressure <sup>8)</sup>	0,25 Mio SP
Note on forced dynamization	Switching frequency min. 1/month
Max. switching frequency	0,5 Hz
Design characteristics	Observe valve function Not free of overlap Pilot actuated poppet valve
Vibration resistance	Transport application test with severity level 2 in accordance with FN942017-4 and EN 60068-2-6
Shock resistance	Shock test with severity level 2 in accordance with FN 942017-5 and EN 60068-2-27
Max. positive test pulse with 0 signal	5 ms
Max. negative test pulse with 1 signal	12 ms

- 1) Further measures can be necessary for realization of the mentioned safety function. For these measures refer to the relevant documentation.
- 2) Further measures can be necessary to fulfil the stated Performance Level (PL). For these measures refer to the relevant documentation.
- 3) Further measures can be necessary to fulfil the stated Safety Integrity Level (SIL). For these measures refer to the relevant documentation.
- 4) The probability of failure is based on this mean number of annual operations (nop).
- 5) For components affected by wear this value will be reached, if for the precise application the mean number of annual operations (nop) is equal or lower than the assumed annual operations of this product. The assumed mean number of annual operations is stated in this datasheet.
- 6) CCF measures have to be verified for the precise application. Therefore, the list with measures is not meant to be exhaustive.
- 7) The ascertainment of characteristic service life values is generally based on the ISO 19973 "Pneumatic fluid power - Assessment of component reliability by testing". Additional, B<sub>10</sub> values of 10 million cycles can also be based on the ISO 13849.
- 8) The value have been determined at maximum allowable pressure with the sample size of one. The service life values B10 are in principle used for calculations according ISO 13849.